



**Wet/Dry/Shampoo
Vacuum**

Operator's Manual



**8 Gallon
Model No.
VK809PIWR**

FOR YOUR SAFETY

Read and understand this manual before use.
Keep this manual for future reference.

The Spanish version of this manual is available online at www.vacmaster.com.
Este manual está disponible en Español en www.vacmaster.com.



**Distributed By
Cleva North America, Inc.
601 Regent Park Court
Greenville, SC 29067**

**Replacement Filters &
Accessories available at:
Vacmaster.com.**

TABLE OF CONTENTS

SECTION	PAGE
Warranty.....	2
Important Safety Instructions.....	3
Double Insulation Instructions.....	5
Extension Cords.....	6
Symbols.....	6
Unpacking & Checking Carton Contents.....	7
General Assembly Instructions.....	9
Dry Vacuum Operation.....	11
Liquid Vacuum Operation.....	12
Carpet/Upholstery Operation.....	14
Maintenance.....	16
Installing & Cleaning Cartridge Filter.....	17
Installing & Cleaning Foam Wet Filter.....	18
Cleaning & Replacing Exhaust Filter.....	19
Changing the Battery.....	19
Troubleshooting.....	20
Exploded View.....	22
Parts List.....	23

Thank you for purchasing this Vacmaster® wet/dry shampoo vacuum cleaner. Feel confident that with Vacmaster® you are obtaining a high quality product engineered for optimal performance. This vacuum is capable of picking up liquids and dry materials.

FOR YOUR SAFETY: CAREFULLY READ AND UNDERSTAND ALL INSTRUCTIONS.

WARRANTY

We take pride in producing a high quality, durable product. This Vacmaster® product carries a limited two (2) year warranty against defects in workmanship and materials from date of purchase under normal household use. If product is to be used for commercial, industrial, or rental use, a 90 day limited warranty will apply. Please keep your receipt as proof of purchase. This warranty gives you specific legal rights, which may vary from state to state. For product service call Customer Service at 1-866-384-8432.

Not Covered by Warranty:

- Any part that has become inoperative due to misuse, negligence, direct/indirect abuse, accidents, improper maintenance, repairs, or alterations;
- Consumables such as filters and accessories;
- Normal wear and tear of parts and attachments, such as hose, nozzles, or casters;
- Normal deterioration of the exterior finish due to use or exposure;
- Any product where serial number/data label is tampered with or removed;
- Any product purchased from an unauthorized retailer.

IMPORTANT SAFETY INSTRUCTIONS

READ AND UNDERSTAND ALL INSTRUCTIONS BEFORE USING THIS VACUUM.

Read and understand this operator's manual and all labels on the vacuum cleaner before operating. Safety is a combination of common sense, staying alert and knowing how your vacuum works. Use this vacuum only as described in this manual. To reduce the risk of personal injury or damage to your vacuum, use only manufacturer recommended accessories.

SAVE THIS MANUAL FOR FUTURE REFERENCE.

When using a vacuum, basic precautions should always be followed including the following. Failure to follow the warnings and instructions may result in explosion, fire and/or serious injury.

WARNING: TO REDUCE THE RISK OF FIRE, ELECTRIC SHOCK, OR INJURY:

- Do not run vacuum unattended.
- Do not use to pick up flammable or combustible liquids, such as gasoline, or use in areas where they may be present.
- Do not vacuum, or use this vacuum near flammable liquids, gases, or explosive vapors like gasoline or other fuels, lighter fluids, cleaners, oil-based paints, natural gas, hydrogen, or explosive dusts like coal dust, magnesium dust, grain dust, or gun powder. Sparks inside the motor can ignite flammable vapors or dust.
- To reduce the risk of health hazards from vapors or dusts, do not vacuum toxic materials.
- Do not use or store near hazardous materials.
- Do not pick up anything that is burning or smoking, such as cigarettes, matches, or hot ashes.
- Do not expose to rain. Store indoors.
- If vacuum is not working as it should, has been dropped, damaged, left outdoors, or dropped into water, return it to a service center.
- Do not unplug by pulling on cord. To unplug, grasp the plug, not the cord.
- Do not use with damaged cord or plug.
- Do not pull or carry by cord, use cord as a handle, close a door on cord, or pull cord around sharp edges or corners.
- Keep cord away from heated surfaces.
- Do not run the vacuum over cord.
- Do not handle plug or vacuum with wet hands.
- Do not use without dust bag and/or filters in place.
- Do not allow to be used as a toy. Close attention is necessary when used by or near children.
- To reduce the risk of injury from accidental starting, unplug power cord before changing or cleaning filter.
- Do not leave vacuum when plugged in. Unplug from outlet when not in use and before servicing.
- Turn off all controls before unplugging.
- Unplug before connecting or disconnecting hose, or any other accessories.
- Do not put any object into openings. Do not use with any opening blocked; keep free of dust, lint, hair, and anything that may reduce air flow.
- Keep hair, loose clothing, fingers, and all parts of body away from openings and moving parts.
- Use extra care when cleaning on stairs.
- Use only as described in this manual. Use only manufacturer's recommended attachments.
- Use only manufacturer's recommended cleaning solution with this vacuum. See the Carpet/Upholstery Cleaning Operation section of this manual.
- This vacuum is provided with double insulation. Use only identical replacement parts. See DOUBLE INSULATION INSTRUCTIONS.



CAUTION: To reduce the risk of injury from moving parts - Unplug before servicing.



WARNING: To reduce the risk of electric shock - Unplug before cleaning or servicing.

FCC COMPLIANCE

This device complies with part 15 of the FCC Rules. Operation is subject to the following two conditions:

- This device may not cause harmful interference, and
- This device must accept any interference received, including interference that may cause undesired operation.



CAUTION: Any changes or modifications not expressly approved by the party responsible for compliance could void the user's authority to operate the equipment.

NOTE: This equipment has been tested and found to comply with the limits for a Class B digital device, pursuant to part 15 of the FCC rules. These limits are designed to provide reasonable protection against harmful interference in a residential installation.

This equipment generates, uses and can radiate radio frequency energy and, if not installed and used in accordance with the instructions, may cause harmful interference to radio communications. However, there is no guarantee that interference will not occur in a particular installation.

If this equipment does cause harmful interference to radio or television reception, which can be determined by turning the equipment off and on, the user is encouraged to try to correct the interference by one or more of the following measures:

- Reorient or relocate the receiving antenna.
- Increase the separation between the equipment and receiver.
- Connect the equipment into an outlet on a circuit different from that to which the receiver is connected.
- Consult the dealer or an experienced radio/TV technician for help.

SAVE THESE INSTRUCTIONS

For Household Use Only

DOUBLE INSULATION INSTRUCTIONS

This Wet/Dry Shampoo Vacuum is double-insulated, eliminating the need for a separate grounding system. Use only identical replacements parts. Read the instructions for Servicing Double-Insulated Wet/Dry Shampoo Vacuums before servicing. Use this vacuum as described in this manual.

Observe the following warnings that appear on the motor housing of your vacuum.



DOUBLE INSULATED - GROUNDING NOT REQUIRED - WHEN SERVICING USE ONLY IDENTICAL REPLACEMENT PARTS.



WARNING: TO REDUCE THE RISK OF ELECTRIC SHOCK - DO NOT EXPOSE TO RAIN. STORE INDOORS.




WARNING: FOR YOUR OWN SAFETY, READ AND UNDERSTAND THE OPERATOR'S MANUAL. DO NOT RUN UNATTENDED. DO NOT PICK UP HOT ASHES, COALS, TOXIC, FLAMMABLE OR OTHER HAZARDOUS MATERIALS. DO NOT USE AROUND EXPLOSIVE LIQUIDS OR VAPORS.



CAUTION: DO NOT VACUUM DRYWALL DUST, FIREPLACE SOOT, OR ASH WITH STANDARD WET/DRY FILTER. THIS TYPE OF DUST IS VERY FINE WHICH MAY NOT BE CAPTURED BY THE FILTER AND CAUSE DAMAGE TO MOTOR. WHEN VACUUMING FINE DUST USE A FINE DUST FILTER (SOLD SEPARATELY).



WARNING: SERVICING OF DOUBLE-INSULATED WET/DRY SHAMPOO VACUUM WITH A DOUBLE-INSULATED WET/DRY SHAMPOO VACUUM, TWO SYSTEMS OF INSULATION ARE PROVIDED INSTEAD OF GROUNDING. NO GROUNDING MEANS IS PROVIDED ON A DOUBLE-INSULATED APPLIANCE, NOR SHOULD A MEANS FOR GROUNDING BE ADDED. SERVICING A DOUBLE INSULATED WET/DRY SHAMPOO VACUUM REQUIRES EXTREME CARE AND KNOWLEDGE OF THE SYSTEM, AND SHOULD BE DONE ONLY BY QUALIFIED SERVICE PERSONNEL. REPLACEMENT PARTS FOR A DOUBLE-INSULATED WET/DRY SHAMPOO VACUUM MUST BE IDENTICAL TO THE PARTS THEY REPLACE. YOUR DOUBLE-INSULATED WET/DRY SHAMPOO VAC IS MARKED WITH THE WORDS 'DOUBLE INSULATED' AND THE SYMBOL  (SQUARE WITHIN A SQUARE) MAY ALSO BE MARKED ON THE APPLIANCE.




EXTENSION CORDS

When using an extension cord with your Wet/Dry Shampoo Vacuum refer to the following table to determine the required A.W.G. wire size. Before using the cleaner make sure the power cord and extension cord are in good working condition. Make repairs or replacements before using the vacuum cleaner. Only use extension cords that are rated for outdoor use.

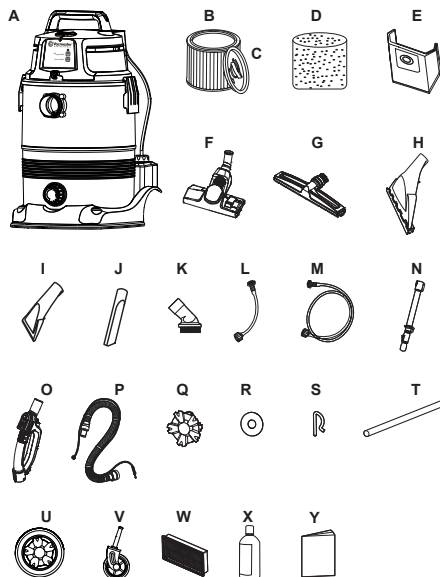
		Length of Extension Cord			
120V		25ft (7.62m)	50ft (15.24m)	100ft (30.48m)	150ft (45.72m)
Ampere rating		A.W.G. Wire Size			
More than	Not more than				
0	6	18	16	16	14
6	10	18	16	14	12
10	12	16	16	14	12
12	16	14	12	Not recommended	

SYMBOLS

The following signal words and meanings are intended to explain the levels of risk associated with this product.

SYMBOL	SIGNAL	MEANING
	DANGER	Indicates an imminently hazardous situation, which, if not avoided, will result in death or serious injury.
	WARNING	Indicates a potentially hazardous situation, which, if not avoided, could result in death or serious injury.
	CAUTION	Indicates a potentially hazardous situation, which, if not avoided, may result in minor or moderate injury.
	NOTICE	(Without Safety Alert Symbol) Indicates a situation that may result in property damage.

UNPACKING & CHECKING CARTON CONTENTS

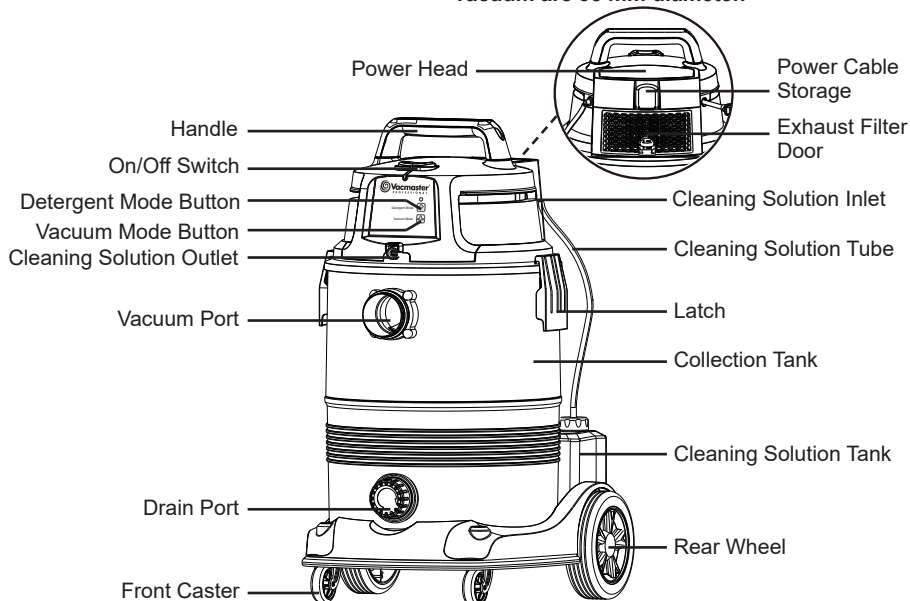


Remove all contents from the box. Remove the power head and take out any contents inside the collection tank. Check each item against the carton contents list.

Carton Contents List:








Key	Description	Qty.
A	Vacuum Assembly	1
B	Washable Cartridge Filter	1
C	Filter Retainer	1
D	Foam Wet Filter	1
E	Dust Collection Bag	1
F	Multi-Surface Floor Nozzle	1
G	Floor Brush/Squeegee Nozzle	1
H	Carpet Shampoo Nozzle	1
I	Hand Held Shampoo Nozzle	1
J	Crevice Tool	1
K	Round Dust Brush	1
L	Short Cleaning Solution Delivery Tube	1
M	Long Cleaning Solution Delivery Tube	1
N	Stainless Steel Telescopic Wand	1
O	Remote Control Handle	1
P	Hose (with delivery tube attached)	1
Q	Hub Cap	2
R	Washer	4
S	'R' Lock Pin	2
T	Wheel Axle	1
U	Rear Wheel	2
V	Front Caster	2
W	Exhaust Filter	1
X	Carpet Cleaning Solution	1
Y	Operator's Manual	1

NOTE: The hose and accessories for this vacuum are 35 mm diameter.

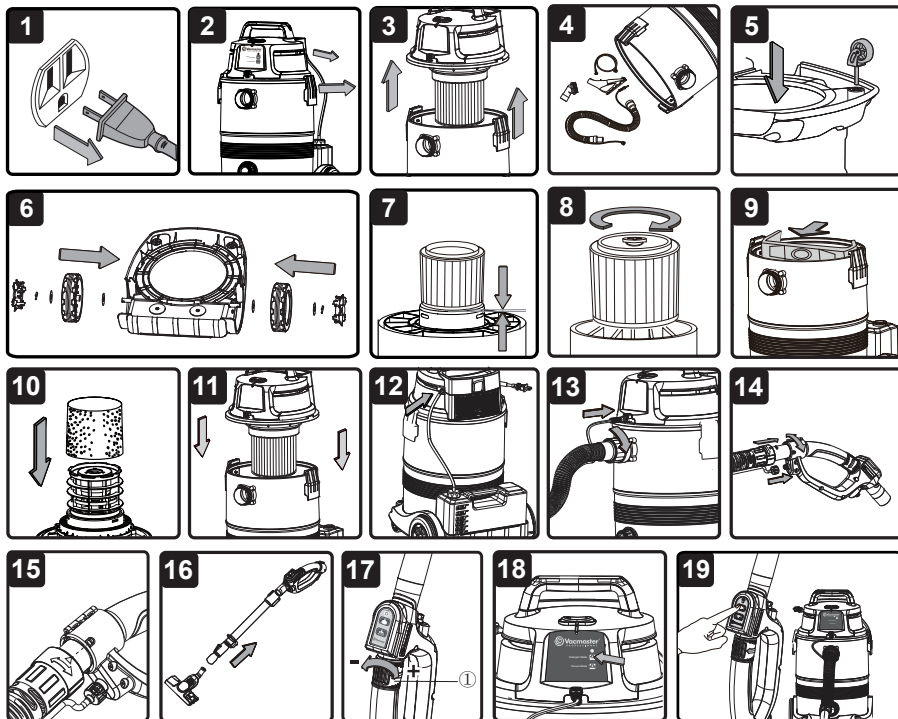


ACCESSORIES

A choice of accessories and attachments are supplied with this product. Refer to below descriptions for their functions.

Illustration	Description	Function
	Hand Held Shampoo Nozzle	For cleaning sofas, chairs, stairs, and car interiors.
	Carpet Shampoo Nozzle	For cleaning carpets.
	Crevice Tool	For cleaning edges, gaps, and tight spaces.
	Stainless Steel Telescopic Wand	Can be extended and used to connect accessories to the remote control handle. Extend the wand for further reach.
	Multi-purpose Floor Nozzle	For cleaning hard surfaces and carpets. Use the tab on the top of the nozzle to release or retract the brush. For use on hard surfaces use the brush setting. For use on carpet, keep the brush retracted.
	Floor Brush/Squeegee Nozzle	For cleaning dry and liquid messes on hard surfaces and low-pile carpets.
	Round Dust Brush	For cleaning fragile or easily scratched items, such as certain furniture or drapes.

GENERAL ASSEMBLY INSTRUCTIONS



⚠ WARNING: DO NOT PLUG THE POWER CORD INTO A POWER OUTLET. MAKE SURE THE PLUG IS DISCONNECTED BEFORE ASSEMBLING THE WET/DRY SHAMPOO VACUUM. TO REDUCE THE RISK OF ELECTRIC SHOCK, DO NOT EXPOSE TO RAIN.

UNPACKING YOUR WET/DRY SHAMPOO VACUUM & GENERAL ASSEMBLY

1. Verify that the power cord is disconnected from the outlet (Fig. 1).
2. Undo the latches. Disconnect the cleaning solution tube from the cleaning solution inlet coupling on the rear side of the power head (Fig. 2).
3. Lift the power head off the collection tank (Fig. 3).
4. Remove the contents from inside the collection tank; make sure you have all contents as listed on page 7 (Fig. 4).
5. Turn the collection tank upside down and insert the two caster feet into the slots and apply pressure until they click into place (Fig. 5).
6. Insert the wheel axle into the rear wheel housing on the base. Insert a washer onto the axle followed by the rear wheel and another washer. Insert the 'R' lock pin into the hole on the end of the axle to lock into place. Snap the hub cap onto the wheel. Repeat the same steps on the other end of the axle (Fig. 6).
7. Your vacuum comes ready for dry vacuum cleaning. If the cartridge filter is not installed, refer to page 17 for installation instructions (Fig. 7 & 8).


8. Optional: For improved dust filtration, fit the dust bag flange onto the inlet port, taking care not to damage the bag (Fig. 9).

NOTE: The dust collection bag is for dry pick-up only.

9. For wet vacuum cleaning, remove the cartridge filter, and install the supplied foam wet filter. See page 18 for the foam wet filter installation instructions (Fig. 10).
10. Place the power head back on the collection tank aligning the top section with the latches, and snap into place (Fig. 11).
11. Ensure the cleaning solution tube is securely fitted to the cleaning solution inlet coupling on the rear side of the power head. Ensure the other end of the tube is securely fitted onto the cap of the cleaning tank (Fig. 12).
12. A cleaning solution delivery tube runs along the hose with a threaded connector and connector cap at each end. Insert the locking end of the hose into the vacuum port of the collection tank and turn clockwise to lock into place. Insert the threaded connector on the end of the delivery tube into the cleaning solution outlet coupling on the front of the power head (Fig. 13).
13. Insert the other end of the hose into the remote control handle. Align the marking "△" on the hose with the middle of the remote control handle. Rotate the hose and ensure the marking "△" is aligned with the marking "Ⓐ" on the remote control handle. Connect the delivery tube cap to the remote control handle (Fig. 14 & 15).
14. Choose the desired accessory and/or the telescopic wand and insert it onto the remote control handle (Fig. 16). The air flow regulation (Ⓜ) on the remote control handle allows you to manually change the amount of vacuum suction (Fig. 17).


NOTE: If the suction power is too high when cleaning, rotate the air flow regulation counter-clockwise to decrease the suction power.

POLARIZED PLUG

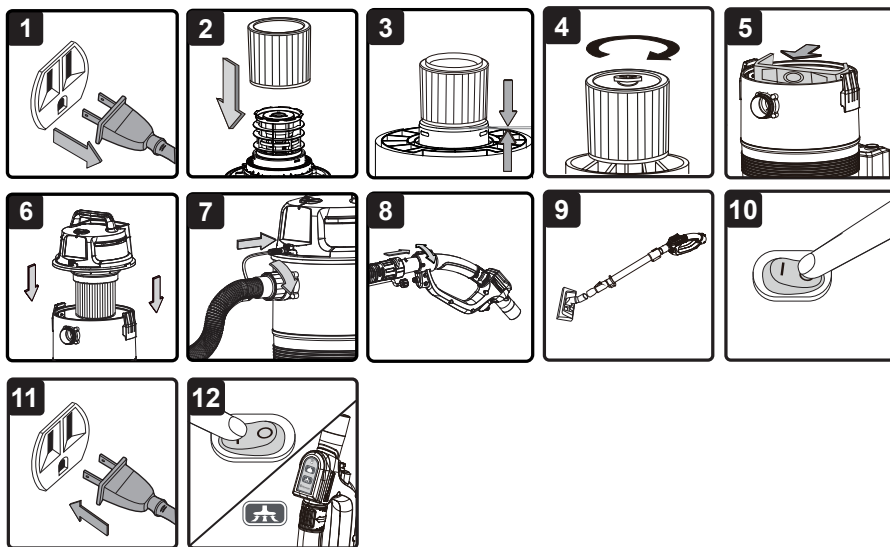
To reduce the risk of electrical shock, this appliance has a polarized plug (one blade wider than the other). This plug will fit in a polarized outlet only one way. If the plug does not fit fully in the outlet, reverse the plug. If it still does not fit, contact a qualified electrician to install the proper outlet. Do not change the plug in any way. Double insulation  eliminates the need for the three wire grounded power cord and grounded power supply system.

PROGRAMMING THE REMOTE CONTROL HANDLE

NOTE: The programming of the remote control handle has been preset and is ready to be used in both vacuum and detergent mode. Reset the remote control handle using the steps below if unable to operate in vacuum mode.

1. Ensure the vacuum is plugged into the power outlet.
2. Switch the on/off switch to the "I" ON position.
3. Locate the detergent mode button on the power head indicated by the following symbol .
4. Press and hold the detergent mode button until the indicator light illuminates continuously (Fig. 18).
5. With the light is on, press and hold the detergent mode button on the remote control handle until the indicator light on the power head starts to flash. The remote control handle is now programmed to vacuum and you should be able to operate in both detergent and vacuum modes (Fig. 19).
6. If the indicator light does not flash, repeat steps 1 to 5.

DRY VACUUM OPERATION



DRY VACUUMING

⚠ WARNING: BE SURE TO READ, UNDERSTAND, AND APPLY INFORMATION ENTITLED “IMPORTANT SAFETY INSTRUCTIONS”. DO NOT VACUUM IN AREAS WITH FLAMMABLE GASES, VAPORS, OR EXPLOSIVE DUSTS IN THE AIR. FLAMMABLE GASES OR VAPORS INCLUDE BUT ARE NOT LIMITED TO: LIGHTER FLUID, SOLVENT TYPE CLEANERS, OIL-BASED PAINTS, GASOLINE, ALCOHOL, OR AEROSOL SPRAYS. EXPLOSIVE DUSTS INCLUDE BUT ARE NOT LIMITED TO: COAL, MAGNESIUM, GRAIN, OR GUN POWDER. TO REDUCE THE RISK OF HEALTH HAZARDS FROM VAPORS OR DUST, DO NOT VACUUM TOXIC MATERIALS.

⚠ WARNING: DO NOT PLUG THE POWER CORD INTO A POWER OUTLET. MAKE SURE THE PLUG IS DISCONNECTED BEFORE CHANGING THE FILTERS.


⚠ CAUTION: DO NOT VACUUM DRYWALL DUST, FIREPLACE SOOT, OR ASH WITH STANDARD WET/DRY FILTER. THIS IS A VERY FINE DUST WHICH WILL NOT BE CAPTURED BY THE FILTER AND MAY CAUSE DAMAGE TO THE MOTOR. WHEN VACUUMING FINE DUST USE A FINE DUST FILTER (SOLD SEPARATELY).

1. Verify that the power cord is disconnected from the outlet (Fig. 1).
2. Your wet/dry shampoo vacuum comes with the cartridge filter pre-installed. In order to prepare your vacuum for dry vacuuming, make sure the cartridge filter completely covers the filter cage against the power head. For installation instructions, see page 17 (Fig. 2 & 3).
3. Place the filter retainer on the top of the cartridge filter and tighten down by turning the retainer handle clockwise (Fig. 4).
4. Optional: For improved dust filtration, fit the dust collection bag flange onto the inlet port, taking

care not to damage the bag (Fig. 5).

5. Place the power head back on the collection tank and secure it in place using the latches (Fig. 6).

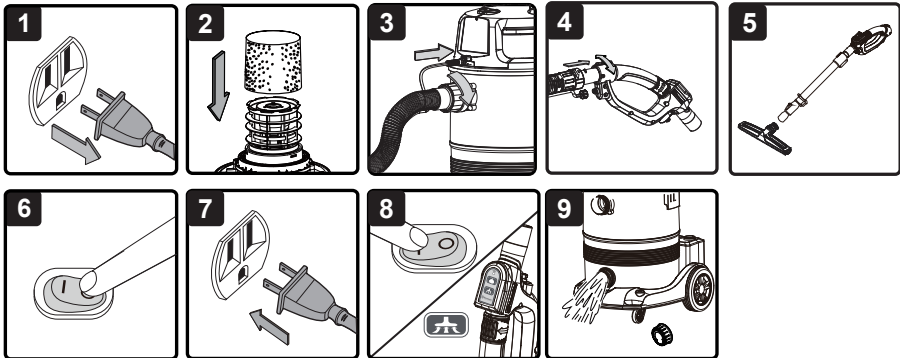
OPERATING INSTRUCTIONS: DRY VACUUMING

6. Insert the locking end of the hose into the vacuum port on the power head and lock into place (Fig. 7).
7. Insert the other end of the hose into the remote control handle (Fig. 8).
8. Choose the desired accessory and insert onto the remote control handle or the stainless steel telescopic wand (Fig. 9). The air flow regulation on the remote control handle allows you to manually change the amount of vacuum suction.
9. Verify that the switch is in the 'O' OFF position before plugging the power cord into the power outlet. Plug the power cord into the outlet (Fig. 10 & 11).
10. Turn the motor on by flipping the switch to the 'I' ON position and begin vacuuming. Press the vacuum mode button, indicated by the following symbol , on either the remote control handle or the power head and operate the vacuum (Fig. 12).
11. Once you have completed vacuuming, switch off the vacuum by pressing the vacuum mode button on either the remote control handle or the power head. Switch to the "O" OFF position and unplug the power cord from the power outlet.

O = OFF I = ON  = VACUUM MODE

**DO NOT USE THE CARTRIDGE FILTER FOR LIQUID VACUUMING.
DO NOT USE THE DUST BAG FOR LIQUID VACUUMING.**

LIQUID VACUUM OPERATION



LIQUID VACUUMING



WARNING: BE SURE TO READ, UNDERSTAND, AND APPLY INFORMATION ENTITLED "IMPORTANT SAFETY INSTRUCTIONS". DO NOT VACUUM IN AREAS WITH FLAMMABLE GASES, VAPORS, OR EXPLOSIVE DUSTS IN THE AIR. FLAMMABLE GASES OR VAPORS INCLUDE BUT ARE NOT LIMITED TO: LIGHTER FLUID, SOLVENT TYPE CLEANERS, OIL-BASED PAINTS, GASOLINE, ALCOHOL, OR AEROSOL SPRAYS. EXPLOSIVE DUSTS INCLUDE BUT ARE NOT LIMITED TO: COAL, MAGNESIUM, GRAIN, OR


GUN POWDER. TO REDUCE THE RISK OF HEALTH HAZARDS FROM VAPORS OR DUST, DO NOT VACUUM TOXIC MATERIALS.



WARNING: DO NOT PLUG THE POWER CORD INTO A POWER OUTLET. MAKE SURE THE PLUG IS DISCONNECTED BEFORE CHANGING THE FILTERS.

1. Verify that the power cord is disconnected from the outlet. Make sure that the collection tank is clean and free of dust and dirt (Fig. 1).
2. Remove the cartridge filter, then carefully install the foam wet filter over the filter cage and place the power head back on the collection tank. For foam wet filter installation instructions, see page 18 (Fig. 2).

OPERATING INSTRUCTIONS: WET VACUUMING

3. Insert the locking end of the hose into the vacuum port on the power head and lock into place (Fig. 3).
4. Insert the other end of the hose into the remote control handle (Fig. 4).
5. Choose the desired accessory and insert onto the remote control handle or the stainless steel telescopic wand (Fig. 5). The air flow regulation on the remote control handle allows you to manually change the amount of vacuum suction.
6. Verify that the switch is in the 'O' OFF position before plugging the power cord into the power outlet. Plug the power cord into the outlet (Fig. 6 & 7).
7. Turn the motor on by flipping the switch to the 'I' ON position. Press the vacuum mode button, indicated by the following symbol , on either the remote control handle or the power head and operate the vacuum (Fig. 8).



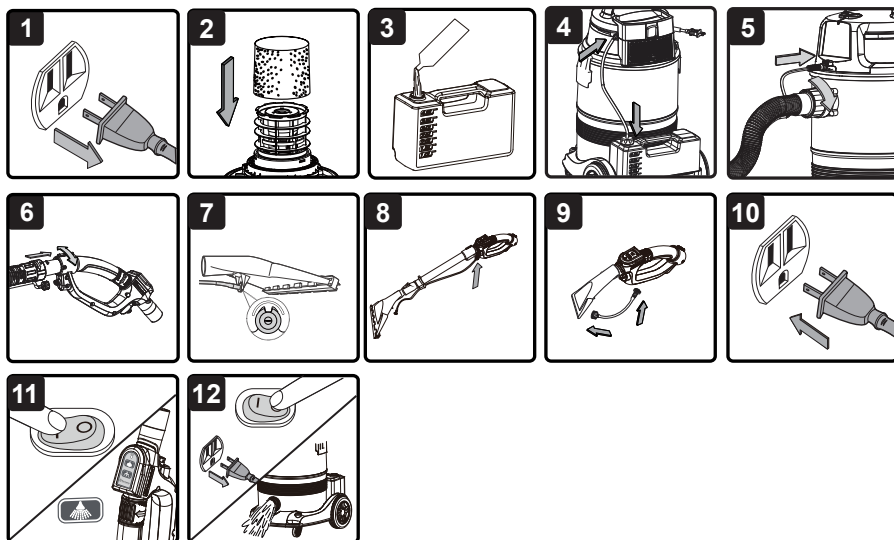
CAUTION: DO NOT SUBMERGE THE REMOTE CONTROL IN LIQUIDS.

8. Once you have completed vacuuming, switch off the vacuum by pressing the vacuum mode button on either the remote control handle or the power head. Switch to the "O" OFF position and unplug the power cord from the power outlet.
9. After use, empty the collection tank by unscrewing the drain cap. Drain liquids into a suitable receptacle or drain (Fig. 9). Once the collection tank is cleaned and dried, refit the drain cap to the collection tank.

IMPORTANT! When vacuuming large quantities of liquids, do not immerse the nozzle completely in the liquid; leave a gap at the tip of the nozzle opening to allow air inflow. The machine is fitted with a float valve that stops the suction action when the collection tank reaches its maximum capacity. You will notice an increase in motor speed. When this happens, turn off the machine, disconnect from power supply, and drain the liquid. To continue vacuuming, replace the drainage cap. After wet vacuuming, turn the machine off and remove plug from power supply. Empty the collection tank, clean and dry the inside and outside before storage.

REMEMBER! The foam wet filter must be removed after wet vacuuming and the cartridge filter must be installed before dry vacuuming again.

CARPET/UPHOLSTERY CLEANING OPERATION



⚠ WARNING: DO NOT RUN THE VACUUM IN DETERGENT MODE WITHOUT SOLUTION IN THE CLEANING SOLUTION TANK.

⚠ WARNING: USE ONLY MANUFACTURER RECOMMENDED CLEANING SOLUTION WITH THIS VACUUM CLEANER.

⚠ WARNING: DO NOT REPLACE FURNITURE UNTIL THE CARPET IS COMPLETELY DRY!

⚠ CAUTION: BEFORE YOU USE THIS PRODUCT TO SHAMPOO CLEAN AN AREA, TEST YOUR WET/DRY SHAMPOO VACUUM AND THE CLEANING SOLUTION ON A SMALL HIDDEN AREA FOR COLORFASTNESS. IF THE COLOR IS AFFECTED, DO NOT USE.

NOTE: ALWAYS DRY VACUUM THE AREA BEING CLEANED BEFORE USING THE SHAMPOO MODE.


1. Verify that the power cord is disconnected from the outlet (Fig. 1).
2. To prepare your vacuum cleaner for carpet/upholstery cleaning, remove the cartridge filter.
3. Carefully install the supplied foam wet filter over the filter cage, making sure the filter cage is completely covered (Fig. 2).
4. Remove the cleaning solution tank from the vacuum base and pour the cleaning solution mixture into the tank. To make the cleaning solution mixture, mix 3 oz. of cleaning solution per 1 gallon of water (Fig. 3).

NOTE: A 17 oz. (500ml) bottle of cleaning solution is provided with this vacuum cleaner. Ensure the cleaning solution and water are mixed at the correct ratio.

NOTE: Once depleted, the cleaning solution can be replaced by a high quality liquid carpet cleaning solution that can be purchased from a local retailer. Always use the cleaning solution as directed by the manufacturer.

5. Insert the cleaning solution tank back into the vacuum base. Connect the cleaning solution tube to the cleaning solution inlet coupling on the rear side of the power head. Insert the other end of the solution tube to the cleaning solution tank and secure the cap into place (Fig. 4).
6. Insert the locking end of the hose into the vacuum port of the collection tank and turn clockwise to lock into place. Insert the threaded connector on the end of the cleaning solution delivery tube into the cleaning solution outlet coupling (Fig. 5).
7. Ensure the hose and delivery tube are locked into the remote control handle (Fig. 6). The air flow regulation on the remote control handle allows you to manually change the amount of vacuum suction.
8. Attach the long delivery tube by installing the spray head to the bottom of the carpet shampoo nozzle and make sure it is locked into place (Fig. 7).
9. Push the end of the remote control handle into the telescopic wand. Attach the carpet shampoo nozzle to the telescopic wand. Connect the other end of the long delivery tube to the remote control handle. This telescopic wand is equipped with a delivery tube hook. The long delivery tube can be attached to the hook for convenient use (Fig. 8).
10. To clean sofas, chairs, stairs and car interiors, connect the hand held shampoo nozzle with the short delivery tube (Fig. 9).

NOTE: When cleaning the headliner of your car, rotate the air flow regulation counter-clockwise to decrease the suction power if the suction power is high.

11. Plug the power cord into a power outlet (Fig. 10).
12. Turn on the motor by flipping the switch to the "I" ON position. Press the detergent mode button, indicated by the following symbol , on either the remote control handle or the power head for cleaning solution application only. Select both the detergent mode and vacuum mode for simultaneous shampoo and wet vacuum operation (Fig. 11).




WARNING: THE MOTOR NOISE CHANGES TO A HIGHER PITCH WHEN THE COLLECTION TANK IS FULL OR BLOCKED. STOP THE VACUUM IMMEDIATELY AND EMPTY THE COLLECTION TANK.

13. Once you have completed cleaning, switch off the vacuum by pressing detergent mode button on either the remote control handle or the power head. Switch to the "O" OFF position, unplug the power cord from the power outlet and drain the liquid (Fig. 12).

O = OFF I = ON  = DETERGENT MODE

NOTE: VACUUM THE CARPET/UPHOLSTERY THOROUGHLY BEFORE USING THE SHAMPOO MODE.

- For carpet cleaning it is recommended to remove all furniture from the room to be cleaned, or move it away from the cleaning area. Clean the whole carpet systematically in squares, using strokes of approximately 5ft. (1.5m) each. This avoids walking over the cleaned carpet until it is completely dry.
- Start furthest away from the entrance of the room, extend the hose and work backwards.
- Pull the carpet shampoo nozzle back towards you in approximately 5ft. strokes. Refill the cleaning solution tank if the solution runs out.
- Select the vacuum mode, indicated by the following symbol , to suck up the dirty solution. More cleaning solution can be applied to heavily soiled areas. The dirty liquid is visible as it is sucked up through the carpet shampoo nozzle. Stop vacuuming when the liquid being extracted is no longer dirty.
- Do not walk over or place furniture on the cleaned area until it is completely dry.

- The hand held shampoo nozzle is ideal for cleaning sofas, chairs, stairs and car interiors.
- The carpet shampoo nozzle is ideal for cleaning carpets.

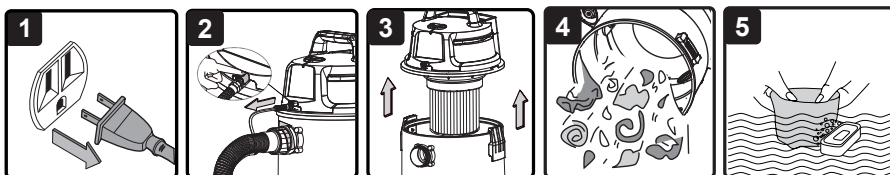
DISASSEMBLING THE WET/DRY SHAMPOO VAC

NOTE: SOME LIQUID MAY REMAIN IN THE TUBES AFTER USING THE PRODUCT FOR LIQUID OR SHAMPOO CLEANING. DISASSEMBLE THE VACUUM OUTDOORS OR OVER A SINK AS THERE MAY BE SOME LEAKAGE.

To disassemble the shampoo vacuum, follow the steps below.

1. Remove the cleaning solution tube from the power head by pressing down on the red latch. Disconnect the hose from the vacuum.
2. Disconnect the accessories and/or telescopic wand from the remote control handle, remembering to disconnect the delivery tubes first, if the carpet or hand held shampoo nozzles are attached.

MAINTENANCE



EMPTYING THE COLLECTION TANK

⚠ WARNING: ALWAYS DISCONNECT THE PLUG FROM THE POWER OUTLET BEFORE REMOVING THE POWER HEAD FROM COLLECTION TANK.

1. Verify that the power cord is disconnected from the outlet (Fig. 1).
2. Press down the latch on the cleaning solution outlet coupling and unplug the delivery tube from the vacuum. Then disconnect the hose from the vacuum (Fig. 2).
3. Undo the latches and remove the power head from the collection tank (Fig. 3). Place the power head on a soft, clean surface upside down.
4. Clear all dirt or debris from the collection tank and hose into a proper waste container (Fig. 4).
5. Clean or replace the filters (Fig. 5).
6. Check the hose, attachments, and power cord to ensure that they have not been damaged.
7. Place the power head back onto the collection tank and secure latches.

IMPORTANT! Clean or change the filter regularly for best performance. **ALWAYS USE THE CARTRIDGE FILTER FOR DRY VACUUMING.** If the machine is used without the cartridge filter, the motor will burn out and the warranty will be voided. Always keep spare filters on hand.

NOTICE! The filters included are made of high quality materials designed to stop small dust particles. The cartridge filter should be used for dry pick-up only. A dry cartridge filter is necessary to pick up dust. If the cartridge filter is wet, it will clog quickly and be very difficult to clean. Handle the filter carefully when removing it for cleaning and replacing it. Check the filters for tears or small holes. A small hole can let dust pass through and out of the filter. Do not use a filter with holes or tears; replace it immediately.

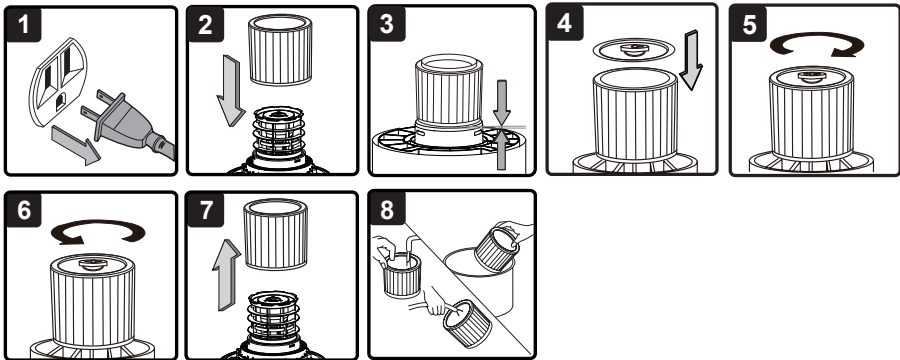
STORAGE

Before storing your vacuum, the collection tank should be emptied and cleaned. The accessories should be cleaned and stored so they can be readily available when needed. Store the wet/dry shampoo vacuum indoors.

REPAIRS

Repairs for this wet/dry shampoo vacuum should be performed only by qualified service personnel using only identical replacement parts.

INSTALLING & CLEANING CARTRIDGE FILTER



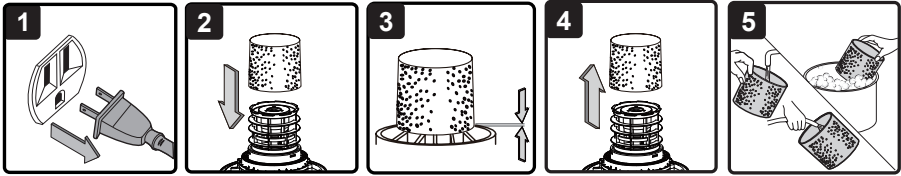
INSTALLING CARTRIDGE FILTER

1. Verify that the power cord is disconnected from the outlet (Fig. 1).
2. Remove the power head and place in an upside down position.
3. Install the cartridge filter over the filter cage making sure the cage is completely covered (Fig. 2 & 3).
4. Place the filter retainer on the top of the cartridge filter over the raised lip and tighten down by turning the retainer clockwise; do not over-tighten (Fig. 4 & 5).
5. Place the power head back onto the collection tank.

REMOVING & CLEANING CARTRIDGE FILTER

1. Unlock and remove the filter retainer by turning the retainer handle counter-clockwise (Fig. 6).
2. With the removed power head in an upside down position, carefully remove the cartridge filter from the filter cage (Fig. 7).
3. Clean the cartridge filter by gently brushing or rinsing off the debris (Fig. 8). Cleaning should not be done indoors in living areas. For optimal performance a new filter is recommended.
4. Install cleaned or new filters as described in steps 2-4 of Installing Cartridge Filter. Wet filters should be removed and allowed to air dry for 24 hours before installing onto the filter cage.

INSTALLING & CLEANING FOAM WET FILTER



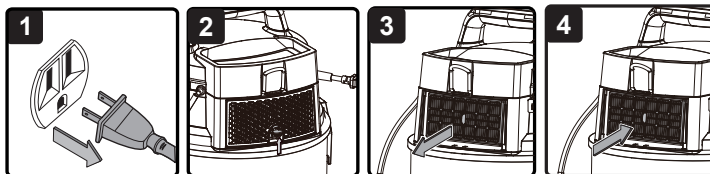
INSTALLING FOAM WET FILTER

1. Verify that the power cord is disconnected from the outlet (Fig. 1).
2. Remove the power head and place in an upside down position. Follow instructions to remove the cartridge filter on page 17.
3. Carefully slide the foam wet filter down over the filter cage making sure the cage is completely covered (Fig. 2 & 3).
4. Place the power head onto the collection tank.

CLEANING FOAM WET FILTER

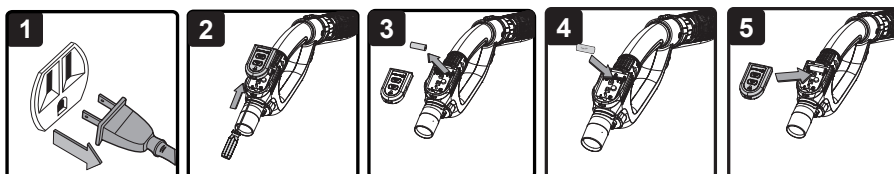
1. With the removed power head in an upside down position, carefully remove the foam wet filter (Fig. 4).
2. Use a mild soap and water solution to wash the foam wet filter and rinse with clean water (Fig. 5).
3. Allow the wet filter to air dry for 24 hours before installing onto the filter cage.

CLEANING & REPLACING EXHAUST FILTER



1. Verify that the power cord is disconnected from the outlet (Fig. 1).
2. Unlock the exhaust filter door by lifting the locking tab upwards to the release. Pull the door out (Fig. 2).
3. Remove the exhaust filter from the vacuum and clean by gently tapping or brushing off dirt. For optimal performance it is recommended to replace the old filter with a new filter regularly (Fig. 3).
4. Install the cleaned or new filter. Then insert the filter door tabs into the upper slots and lock the filter door into place (Fig. 4).

CHANGING THE BATTERY



NOTE: Only replace the battery with a 23A 12V Alkaline battery.

1. Verify that the power cord is disconnected from the outlet (Fig. 1).
2. Use a Phillips screwdriver to press the release latch in the front of the battery cover. Remove the battery cover from the battery compartment (Fig. 2).
3. Remove the battery from the battery compartment. Insert the new battery with the terminals in the direction shown inside the battery compartment (Fig. 3 & 4).
4. Align the protrusion on the back of the battery cover with the slot on the battery compartment, and press down the battery cover to click into place (Fig. 5).

TROUBLESHOOTING

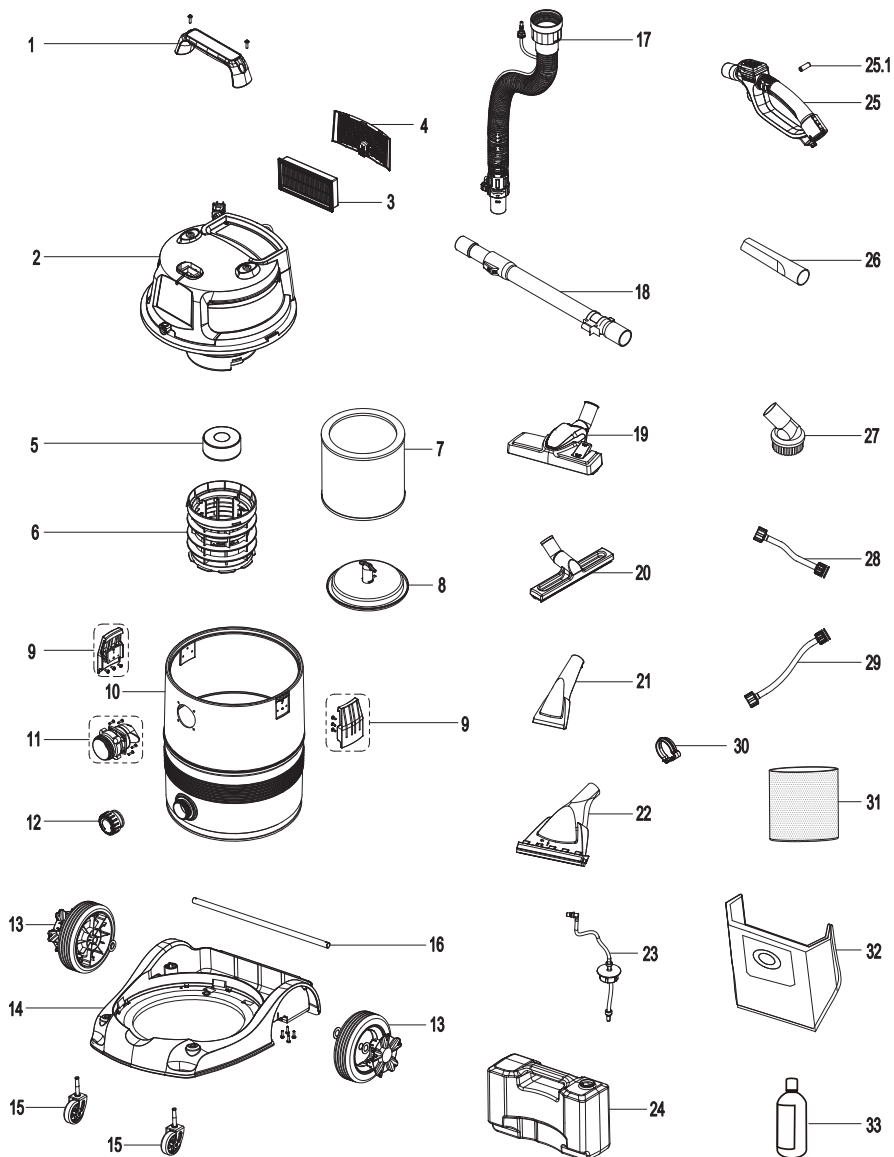


WARNING: TO REDUCE THE RISK OF ELECTRIC SHOCK, UNPLUG BEFORE TROUBLESHOOTING.

PROBLEM	POSSIBLE CAUSE	SOLUTION
The wet/dry shampoo vacuum will not operate.	Faulty power cord, switch or motor.	Unplug and check the power cord. If damaged, have it repaired by a professional or call customer service.
	No power supply.	Check the power supply, cord, breakers and fuses.
	On/Off switch is in the wrong position. Or the correct mode button is not selected.	Press the ON 'I' button on the power head and select desired cleaning mode. Follow instructions on page 11-15.
	Collection tank full.	Empty the collection tank.
The dust comes out from the motor cover.	The cartridge filter is missing or damaged.	Attach or replace the cartridge filter.
	Incorrect use of foam filter when dry vacuuming.	Replace the foam wet filter with the cartridge filter.
	The exhaust filter is missing or damaged.	Attach or replace the exhaust filter.
Low suction power and high operating noise / vibrations.	Nozzle, hose, or tank inlet is blocked.	Check and remove blockage from the nozzle, hose, and tank inlet.
	Cartridge filter is clogged by fine dust.	Take off the filter and clean it or install a new cartridge filter.
	Float valve has closed.	Empty the collection tank of any liquid waste and ensure the float valve located underneath the filter is able to move freely.
Cleaning solution does not spray out.	Detergent mode is not selected.	Press the detergent mode button.
	Cleaning solution tank is empty.	Refill the cleaning solution tank.
	Incorrectly fitted tubes.	Check fittings and connections. Ensure there are no kinks in tubes.
	The water pump inside the power head overheats.	Let the vacuum cool down to reach a normal temperature, then re-start the vacuum.

PROBLEM	POSSIBLE CAUSE	SOLUTION
Foam is leaking from the outlet on the power head.	Incorrect cleaning solution or incorrect mix ratio is used.	Use only manufacturer's recommended cleaning solution. Ensure the cleaning solution is mixed with water at the correct ratio.
The remote control will not operate.	The battery has no charge.	Replace the old battery with a new one.
	The remote control is not programmed.	Reset the remote control using the instructions on page 10.
	The remote control is damaged.	Contact customer service.

EXPLODED VIEW



PARTS LIST

Part	Drawing Number	Description	Quantity
1	551267101	Handle Assembly	1
2		Power Head Assembly	1
3	551121122	Exhaust Filter Assembly	1
4	551324103	Exhaust Filter Door	1
5	551006103	Float	1
6	551005104	Filter Cage	1
7	551324115	Cartridge Filter	1
8	551004104	Filter Retainer	1
9	551267104	Latch Assembly	2
10		Collection Tank	1
11	551017113	Vacuum Port Assembly	1
12	551324118	Drain Cap With Gasket	1
13	551057115	Rear Wheel Assembly	2
14	551026157	Vacuum Base Assembly	1
15	551026120	Caster	2
16	551017119	Wheel Axle	1
17	551026124	Hose	1
18	551026125	Stainless Steel Telescopic Wand	1
19	551425105	Multi-surface Floor Nozzle	1
20	551324122	Floor Brush/Squeegee Nozzle	1
21	551026129	Hand Held Shampoo Nozzle	1
22	551026128	Carpet Shampoo Nozzle	1
23	551324121	Cleaning Solution Tank Cap	1
24	551026135	Cleaning Solution Tank	1
25	551506102	Remote Control Handle Assembly	1
25.1		Battery	1
26	551051116	Crevice Tool	1
27	551023139	Round Dust Brush	1
28	551324129	Short Solution Delivery Tube	1
29	551026130	Long Solution Delivery Tube	1
30	551026133	Tube Retainer	1
31	551008132	Foam Wet Filter	1
32	551506103	Dust Collection Bag	1
33		Carpet Cleaning Solution	1