



7.4V Car Vacuum
7.4V Aspirateur de Voiture
7.4V Aspiradora Para Autos

Operator's Manual
Manuel D'utilisation
Manual Del Usuario

EN
P. 02

FR
P. 15

ES
P. 28



- Model No.
- Référence de modèle
- N° de modelo

AA07V1 0901

FOR YOUR SAFETY

Read and understand this manual before use. Keep this manual for future reference.

POUR GARANTIR VOTRE SÉCURITÉ

Lisez et comprenez ce manuel avant toute utilisation de l'appareil.
Conservez le présent manuel afin de pouvoir vous y référer ultérieurement.

POR SU SEGURIDAD

Lea y comprenda este manual antes de usar el producto.
Conserve este manual para futura referencia.

Distributed by/
Distribué par/Distribuido por:

Cleva North America
601 Regent Park Court
Greenville, SC 29607
1-866-384-8432

©2024 Energizer Auto. Armor All is a trademark of Energizer Auto and is used under license by Cleva North America, Inc.

©2024 Energizer Auto. Armor All est une marque déposée de Energizer Auto qui est utilisée sous licence par Cleva North America, Inc.

©2024 Energizer Auto. Armor All es marca registrada de Energizer Auto y se utiliza bajo licencia de Cleva North America, Inc.

TABLE OF CONTENTS

SECTION	Page
Warranty	2
Important Safety Instructions	3
Unpacking & Checking Carton Contents	6
Operation	7
Maintenance	10
Troubleshooting	12
Exploded View	13
Parts List	14

Thank you for purchasing this Armor All® 7.4 volt handheld car vacuum. Feel confident that with our Armor All® handheld car vac you are obtaining a high-quality product engineered for optimal performance. This vacuum is capable of picking up liquids and dry materials.

FOR YOUR SAFETY: CAREFULLY READ AND UNDERSTAND ALL INSTRUCTIONS.

WARRANTY

We take pride in producing a high-quality, durable product. This vacuum carries a limited one (1) year warranty against defects in workmanship and materials from date of purchase (or, for deliveries in the State of California, one year from the date of delivery), under normal household use. Please keep your receipt as proof of purchase. This warranty gives you specific legal rights, and you may have other rights, which vary from state to state.

For customer service please call 1-866-384-8432.

Not Covered by Warranty:

- Any part that has become inoperative due to misuse, negligence, direct/indirect abuse, accidents, improper maintenance, repairs or alterations;
- Consumables such as filters and accessories;
- Normal wear and tear of parts and attachments, such as nozzles or filters;
- Normal deterioration of the exterior finish due to use or exposure;
- Any product where serial number/data label is tampered with or removed;
- Any product purchased from an unauthorized retailer.

IMPORTANT SAFETY INSTRUCTIONS

READ AND UNDERSTAND ALL INSTRUCTIONS BEFORE USING THIS VACUUM.

Read and understand this operator's manual and all labels on the vacuum cleaner before operating. Safety is a combination of common sense, staying alert and knowing how your vacuum works. Use this vacuum only as described in this manual. To reduce the risk of personal injury or damage to your vacuum, use only manufacturer recommended accessories.

SAVE THIS MANUAL FOR FUTURE REFERENCE.

When using a vacuum, basic precautions should always be followed including the following. Failure to follow the warnings and instructions may result in explosion, fire and/or serious injury.



WARNING: TO REDUCE THE RISK OF FIRE, ELECTRIC SHOCK OR INJURY:

- Do not run vacuum unattended.
- Do not use outdoors or on wet surfaces.
- Do not use to pick up flammable or combustible liquids, such as gasoline, or use in areas where they may be present.
- Do not vacuum, or use this vacuum near flammable liquids, gases, or explosive vapors like gasoline or other fuels, lighter fluids, cleaners, oil-based paints, natural gas, hydrogen, or explosive dust like coal dust, magnesium dust, grain dust, or gun powder. Sparks inside the motor can ignite flammable vapors or dust.
- To reduce the risk of health hazards from vapors or dust, do not vacuum toxic materials.
- Do not use or store near hazardous materials.
- Do not pick up anything that is burning or smoking, such as cigarettes, matches, or hot ashes.
- Do not pick up hard or sharp objects such as glass, nails, screws, coins, etc.
- Use only on dry, indoors surfaces.
- Do not expose to rain. Store indoors.
- If vacuum is not working as it should, has been dropped, damaged, left outdoors, or dropped into water, return it to a service center.
- Do not allow to be used as a toy. Close attention is necessary when used by or near children.
- Do not put any object into openings. Do not use with any opening blocked; keep free of dust, lint, hair, and anything that may reduce air flow.
- Keep hair, loose clothing, fingers, and all parts of body away from openings and moving parts.
- Do not unplug by pulling on cord. To unplug, grasp the plug, not the cord.
- Do not handle vacuum, charger, charger plug, or charger terminal, with wet hands.

- Do not charge the vacuum outdoors.
- Use only the charger supplied by the manufacturer to recharge.
- Do not incinerate the appliance even if it is severely damaged. The batteries can explode in a fire.
- Be careful not to pinch the cord in the vehicles' doors, windows or levers.
- Do not use with damaged cord or plug.
- Do not pull or carry by cord, use cord as a handle, close a door on cord, or pull cord around sharp edges or corners.
- Keep cord away from heated surfaces.
- Do not handle plug or vacuum with wet hands.
- Do not use without filters in place.
- To reduce the risk of injury from accidental starting, ensure the power is OFF before changing or cleaning filter.
- Use extra care when cleaning stairs.
- Turn off the vacuum before connecting or disconnecting accessories.
- Prevent unintentional starting. Ensure the power is OFF before picking up or carrying the vacuum. Carrying the vacuum with your finger on the power button or energizing vacuum that have the power on invites accidents.
- Keep the temperature range between 40°F (4°C) and 100°F (40°C) when charging battery, storing machine or during use.
- Recharge only with the charger specified by the manufacturer. A charger that is suitable for one type of battery pack may create a risk of fire when used with another battery pack.
- Under abusive conditions, liquid may be ejected from the battery; avoid contact. If contact accidentally occurs, flush with water. If liquid contacts eyes, additionally seek medical help. Liquid ejected from the battery may cause irritation or burns.
- Do not expose a vacuum to fire or excessive temperature. Exposure to fire or temperature above 265°F (130°C) may cause explosion.
- Follow all charging instructions and do not charge the vacuum outside of the temperature range specified in the instructions. Charging improperly or at temperatures outside of the specified range may damage the battery and increase the risk of fire.
- Have servicing performed by a qualified repair person using only identical replacement parts. This will ensure that the safety of the product is maintained.
- Do not modify or attempt to repair the vacuum except as indicated in the instructions for use and care.
- Use only as described in this manual. Use only manufacturer's recommended attachments.
- Use only with Listed/Certified ITE equipment/power supply or Class II power unit.



CAUTION: TO REDUCE THE RISK OF INJURY FROM MOVING PARTS - TURN OFF THE VACUUM BEFORE CLEANING OR SERVICING.

FCC COMPLIANCE

This device complies with part 15 of the FCC Rules. Operation is subject to the following two conditions:

1. This device may not cause harmful interference.
2. This device must accept any interference received, including interference that may cause undesired operation.

NOTE: This equipment has been tested and found to comply with the limits for a Class B digital device, pursuant to part 15 of the FCC Rules. These limits are designed to provide reasonable protection against harmful interference in a residential installation.

This equipment generates, uses and can radiate radio frequency energy and, if not installed and used in accordance with the instructions, may cause harmful interference to radio communications. However, there is no guarantee that interference will not occur in a particular installation. If this equipment does cause harmful interference to radio or television reception, which can be determined by turning the equipment off and on, the user is encouraged to try to correct the interference by one or more of the following measures:

- Reorient or relocate the receiving antenna.
- Increase the separation between the equipment and receiver.
- Connect the equipment into an outlet on a circuit different from that to which the receiver is connected
- Consult the dealer or an experienced radio / TV technician for help.

CAN ICES-3 (B)/NMB-3(B)

Product Disposal

This product contains an internal Lithium-ion battery pack formulated from environmentally sensitive materials. This product must be disposed of properly with due care for the environment. Do not dispose of product with household garbage. Consult your local waste authority for information regarding available recycling or disposal options.

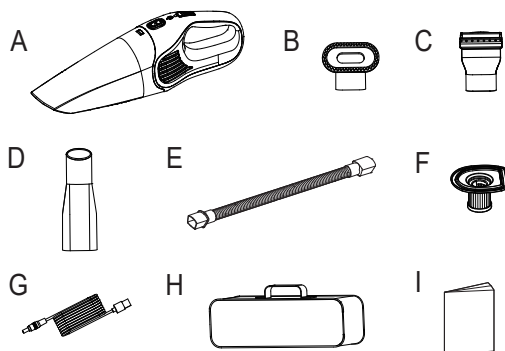


RECYCLE OR DISPOSE OF IN ACCORDANCE WITH FEDERAL AND LOCAL REGULATIONS.

SAVE THESE INSTRUCTIONS

For Household Use Only

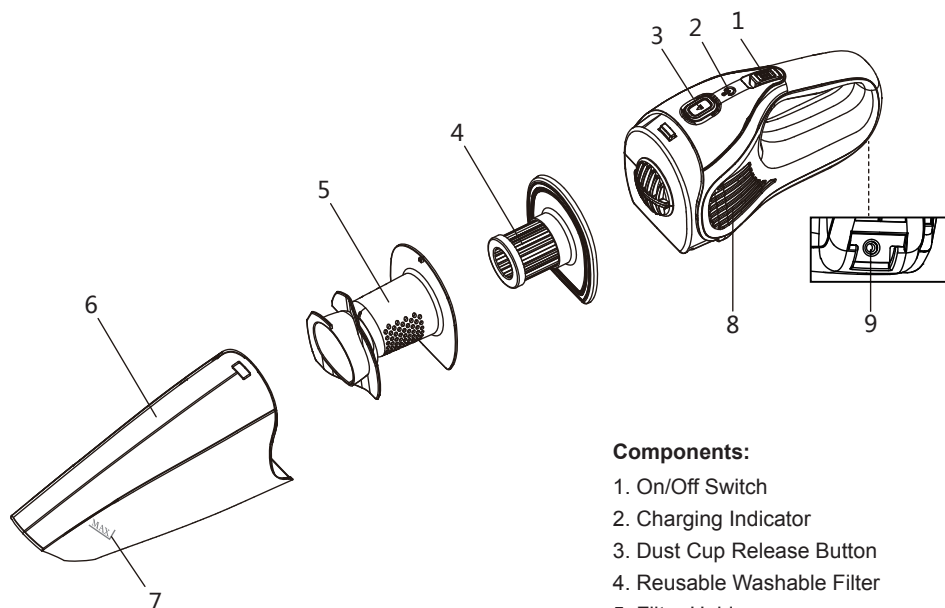
UNPACKING & CHECKING CARTON CONTENTS



Remove all contents from the box. Check each item against the carton contents list.

Carton Contents List:

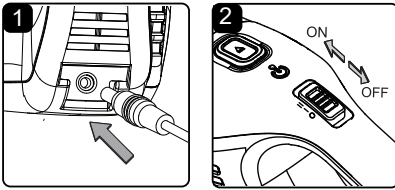
Key	Description	Qty.
A	Car Vacuum Assembly	1
B	Detail Brush	1
C	Pet Hair Rake	1
D	Crevice Tool.....	1
E	Hose	1
F	Reusable Washable Filter.....	1
G	Charging Cord	1
H	Storage Bag	1
I	Operator's Manual	1



Components:

1. On/Off Switch
2. Charging Indicator
3. Dust Cup Release Button
4. Reusable Washable Filter
5. Filter Holder
6. Dust Cup
7. Max Fill Line
8. Vents
9. Charging Port

OPERATION



CHARGING THE VACUUM



WARNING: BEFORE CHARGING, MAKE SURE THE VACUUM IS TURNED OFF.

NOTE: Before using the vacuum for the first time, charge vacuum to full capacity. The initial charging lasts approx. 24 hours. The subsequent charging time is approx. 5 hours.

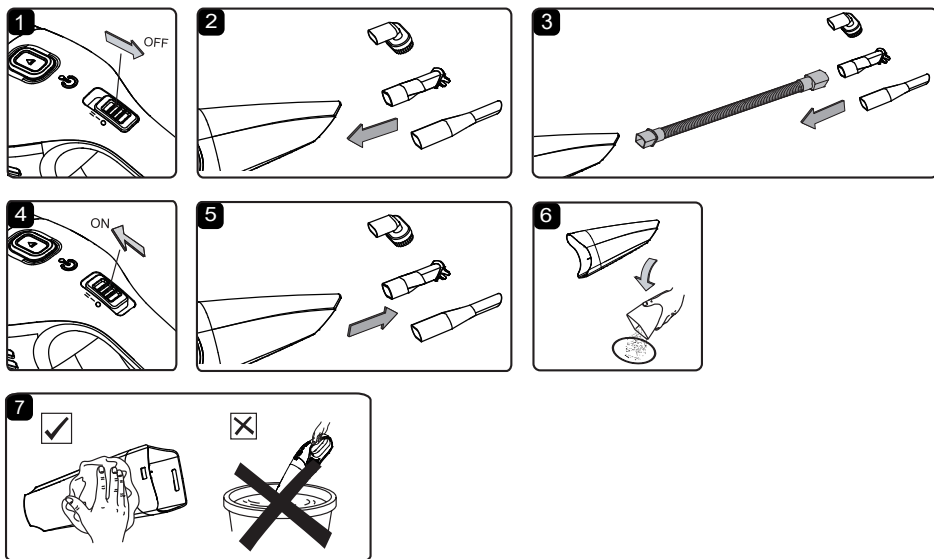
1. Insert the charging cord into the charging port on back of the vacuum (Fig. 1).
2. Connect the USB to adapter and into a wall outlet.
3. The charging indicator on the vacuum flashes red when charging. When the battery is charged, the charging indicator lights up green, and then goes out in 10 minutes.

NOTE: If the charging indicator does not flash red when charging, check to ensure that the charging cord is fully inserted into the charging port on the vacuum, and is properly plugged into the adapter and the wall outlet.

4. Remove the charging cord from the vacuum. Remove the charging adapter from the outlet.
5. Once the battery needs re-charge, the charging indicator will start green flashing to indicate it is time to charge the vacuum. The green flashing will continue until the vacuum is charged or is completely out of battery power.

USING THE VACUUM

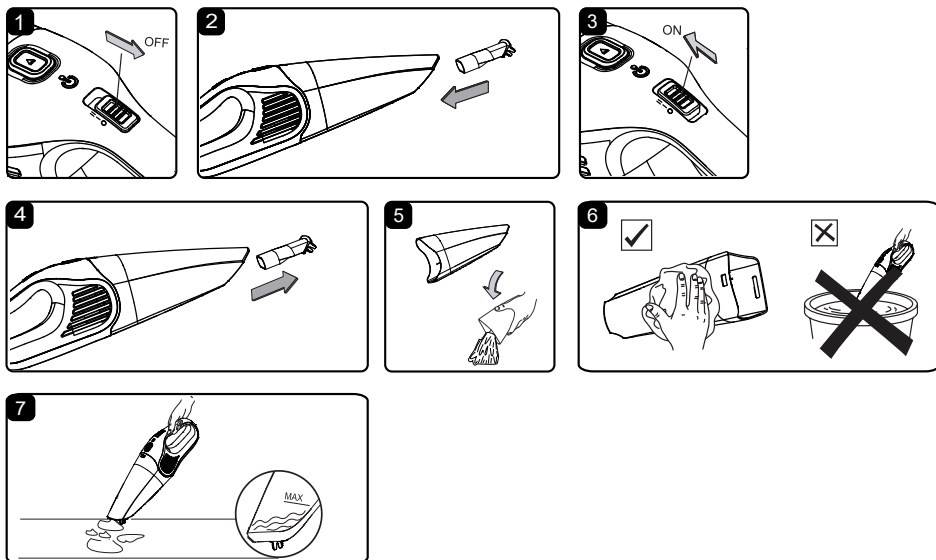
1. Make sure that the vacuum is fully charged before use.
2. Your vacuum comes ready for dry or wet vacuum cleaning. If the filter is not installed, refer to page 10-11 for installation instructions.
3. To power on the vacuum, slide the On/Off switch forward to the 'I' or 'II' position (Fig. 2). Once turned on, the charging indicator lights up green.
4. The vacuum has two-speed controls, 'I' and 'II'. Change speed by sliding the On/Off switch between 'I' or 'II' position.
5. To power off the vacuum, slide the On/Off switch back to the 'O' OFF position (Fig. 2). The charging indicator goes out.



OPERATING INSTRUCTIONS: DRY VACUUMING

The vacuum can be used as assembled or with one of the included nozzles. For use with the desired nozzle:

1. Verify that the switch is in the 'O' OFF position (Fig. 1).
2. Insert the desired nozzle into the end of the dust cup until secured in place (Fig. 2).
The product can be used with the crevice tool to clean between tight spaces, with the detail brush to clean scratch-prone surfaces, with the pet hair rake for easy pick up of pet hair on carpets, car seats, or floor boards.
3. Optional: For further vacuuming, attach the hose to the end of the dust cup. Then insert the nozzle into the end of the hose until secured in place (Fig. 3).
4. Turn the vacuum on by sliding the switch forward to the 'I' or 'II' position and begin vacuuming (Fig. 4).
5. After use, turn the vacuum off. Remove the accessory from the dust cup by pulling it out (Fig. 5).
6. Remove the dust cup by pressing down on the dust cup release button and pulling the dust cup away from the vacuum. Remove the reusable washable filter and the filter holder. Refer to page 10-11 for removal instructions.
7. Empty the dust cup, clean and dry the inside and outside before storage (Fig. 6 & 7).



OPERATING INSTRUCTIONS: WET VACUUMING



CAUTION: IF THE DUST CUP CONTAINS LIQUID WASTE, DO NOT TURN THE VACUUM UPSIDE DOWN AS LIQUID MAY ENTER THE MOTOR.

The vacuum can be used for vacuuming up small quantities of fluid with the use of the pet hair rake. For use with the pet hair rake:

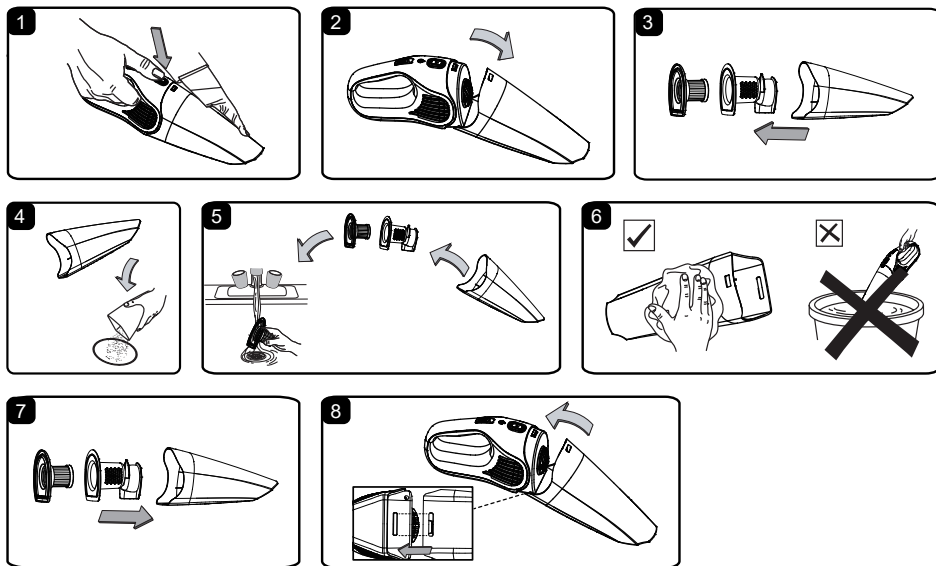
1. Verify that the switch is in the 'O' OFF position (Fig. 1).
2. Insert the pet hair rake into the end of the dust cup until secured in place (Fig. 2).
3. Turn the vacuum on by sliding the switch forward to the 'I' or 'II' position and begin vacuuming (Fig. 3).
4. After use, turn the vacuum off. Remove the accessory from the dust cup by pulling it out (Fig. 4).
5. Remove the dust cup by pressing down on the dust cup release button and pulling the dust cup away from the vacuum. Remove the reusable washable filter and the filter holder. Refer to page 10-11 for removal instructions.
6. Empty the dust cup, clean and dry the inside and outside before storage (Fig. 5 & 6).

IMPORTANT!

The vacuum is designed for vacuuming only small amounts of liquid.

STOP vacuuming if the liquid in the dust cup reaches the "MAX" indicator line on the dust cup (Fig. 7). Empty it immediately before next use or storage.

MAINTENANCE



CLEANING & REPLACING FILTER



WARNING: BEFORE CLEANING, MAKE SURE THE VACUUM IS TURNED OFF.



WARNING: DO NOT USE ALCOHOL, ACETONE, BENZENE, AGGRESSIVE CLEANING AGENTS, ETC., TO CLEAN THE SYNTHETIC PARTS OF THE DEVICE. DO NOT USE HARD BRUSHES OR METALLIC OBJECTS.

NOTE: The filter is re-usable and should be cleaned regularly. For best performance, it is suggested to clean the filter after every use.



WARNING: IF THE MACHINE IS USED WITHOUT THE FILTER, THE MOTOR WILL BURN OUT AND THE WARRANTY WILL BE VOIDED. ALWAYS KEEP SPARE FILTERS ON HAND.

NOTE: A dry filter is necessary to pick up dust. If the filter is wet, it will clog quickly and be very difficult to clean. If wet, let the filter completely air dry before using it for dry pick-up. Handle the filter carefully when removing it for cleaning and replacing. Check the filters for tears or small holes. A small hole can let dust pass through and out of the filter. Do not use a filter with holes or tears; replace it immediately. Call customer service at 1-866-384-8432 for replacement filter.



WARNING: DO NOT USE THE FILTER UNTIL IT HAS COMPLETELY DRIED.

1. Verify that the switch is in the 'O' OFF position.
2. Press the dust cup release button and remove the dust cup (Fig. 1 & 2).
3. Remove the reusable washable filter and the filter holder from the dust cup, and then clean any loose dust off the filter with a soft bristle brush (Fig. 3).
4. Empty all debris and any dust from the dust cup (Fig. 4).
5. Use a mild soap and water solution to wash the filter and rinse with clean water, air dry and re-insert filter once completely dry (Fig. 5).
6. Allow the wet filter to air dry for 24 hours before fitting into the dust cup. For optimal performance, a new filter is recommended after 12 months.
7. Make sure the dust cup, the filter holder and reusable washable filter are clean and dry before using it again. DO NOT immerse the vacuum in water (Fig. 6).
8. Cleaning the vacuum housing using a damp cloth. Make sure no fluid enters the housing.
9. Refit the filter holder and reusable washable filter into the dust cup (Fig. 7). If required, replace with new filter. Fit the new reusable washable filter into the dust cup.
10. Refit the dust cup onto the vacuum. Make sure the dust cup clicks into place (Fig. 8).



CAUTION: CLEANING THE FILTER SHOULD NOT BE DONE INDOORS IN LIVING AREAS.



WARNING: NEVER USE THE VACUUM WITHOUT THE FILTER INSTALLED.

IMPORTANT! To assure product SAFETY and RELIABILITY, repairs, maintenance, and adjustments (other than those listed in this manual) should be performed by an authorized service center or other qualified service technicians, always using identical replacement parts.

STORAGE

Before storage, empty the dust cup. Clean and dry the inside and outside of the dust cup. The accessories should be cleaned and stored so they can be readily available when needed. Place the vacuum in the storage bag. Store the vacuum indoors.

REPAIRS

Repairs for this car vacuum should be performed only by qualified service person using only identical replacement parts.

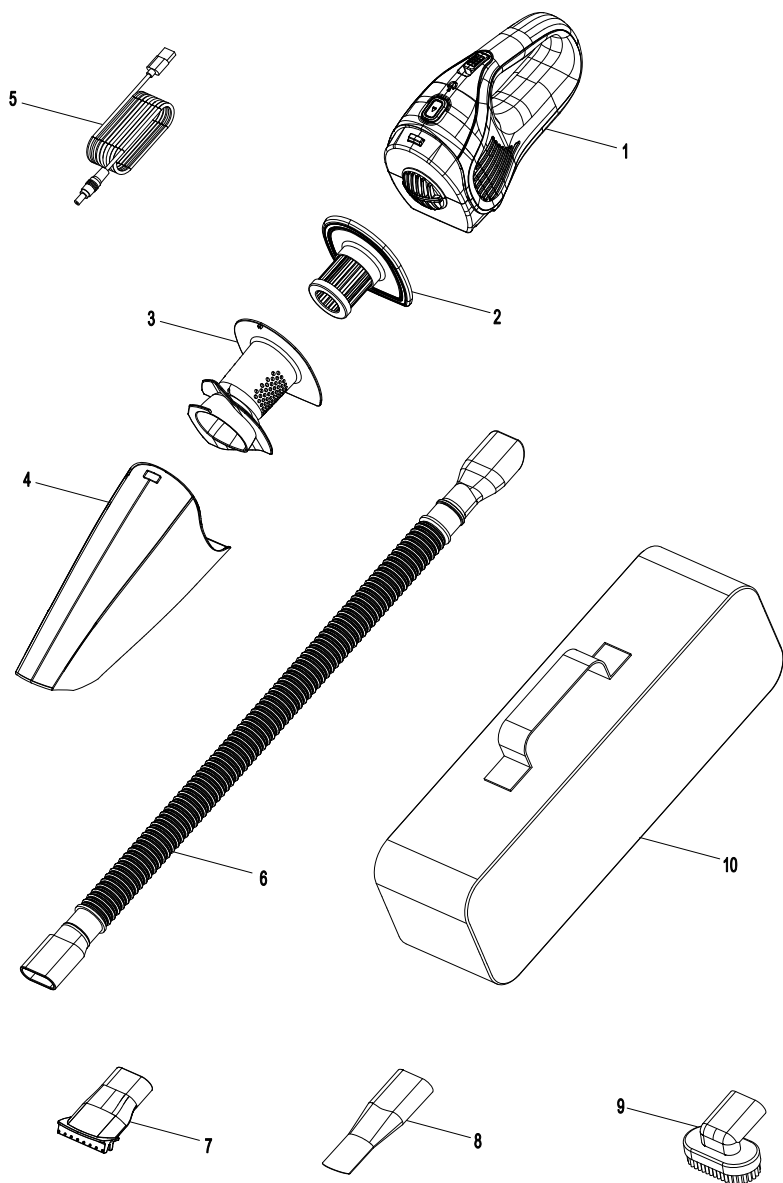
TROUBLESHOOTING



WARNING: TO REDUCE THE RISK OF ELECTRIC SHOCK, TURN OFF THE VACUUM BEFORE TROUBLESHOOTING.

PROBLEM	POSSIBLE CAUSE	SOLUTION
The vacuum will not operate.	The battery pack is discharged.	Charge the vacuum.
	Hand vacuum or battery is damaged.	Call customer service at 1-866-384-8432 for assistance.
Dust is being released through the vents.	The filter is missing or damaged.	Attach or replace the filter.
Reduced efficiency and motor/speed vibration.	There are blockages in the nozzle, or the vacuum inlets.	Turn off the vacuum and check nozzle, and inlets for blockages.
	The filter is clogged by fine dust.	Take off the filter and clean it or install a new filter.
	Dust cup full.	Empty the dust cup and clean the filter.
The vacuum will not charge.	Charging cord is not inserted into the charging port on the vacuum firmly.	Be sure the charging cord is fully inserted into the charging port on the vacuum, and is properly plugged into the adapter and the wall outlet.
	The charging cord is damaged.	Replace the charging cord. Call customer service at 1-866-384-8432 for assistance.
	Dust accumulated on the charging port of the vacuum.	Clean off any dust accumulated on the charging port of the vacuum.
	The charging indicator is damaged.	Call customer service at 1-866-384-8432 for assistance.
	No power at electrical outlet.	Check circuit breakers. Replace the charging adapter.
	The battery is damaged.	Call customer service at 1-866-384-8432 for assistance.

EXPLODED VIEW



PARTS LIST

Part	Part Number	Description	Quantity
1		Powerhead Assembly	1
2	561115102	Reusable Washable Filter	1
3	561115103	Filter Holder	1
4		Dust Cup	1
5	561115105	Charging Cord	1
6	561115106	Hose	1
7	561115107	Pet Hair Rake	1
8	561115108	Crevice Tool	1
9	561115109	Detail Brush	1
10	561115110	Storage Bag	1